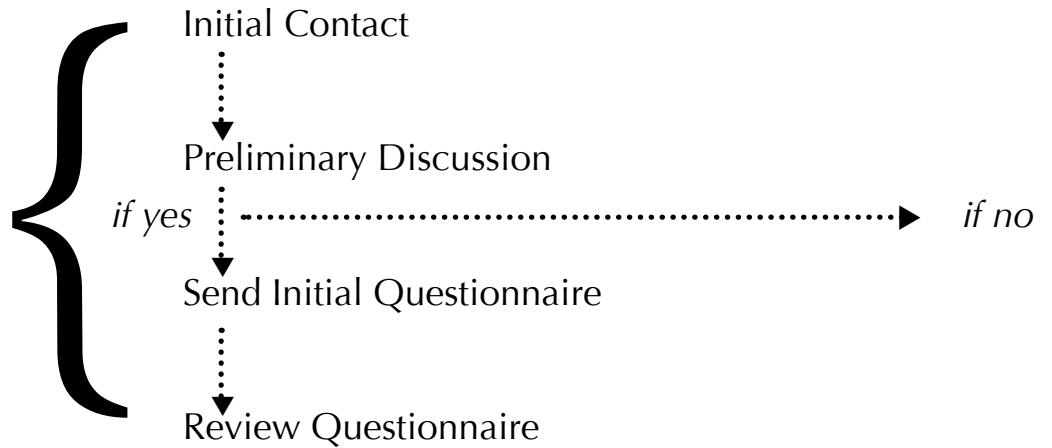


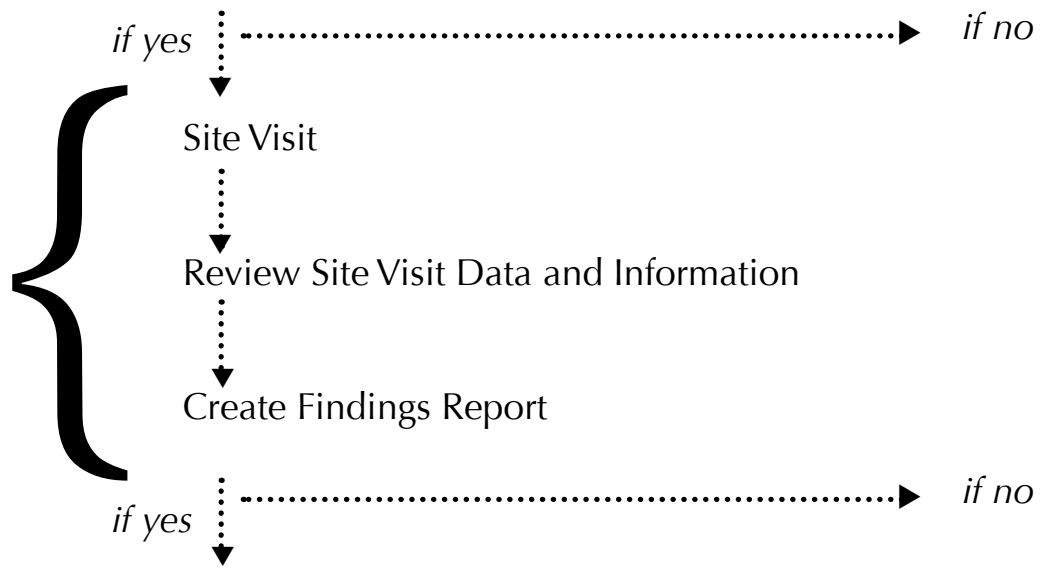


# Farmers Screen Project Vetting Map

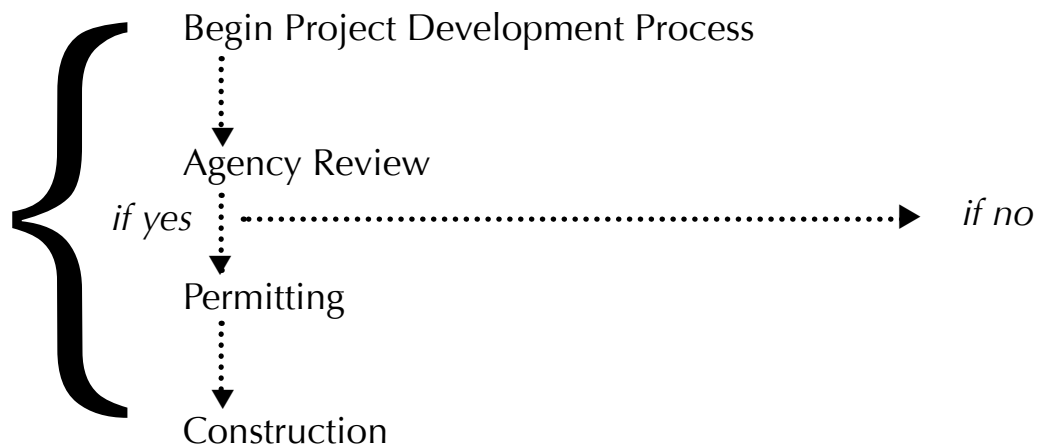
**STEP 1**



**STEP 2**



**STEP 3**



**STEPS** = for details and vetting considerations taken in each step, refer to Farmers Screen Site Selection Process document.  
**if yes** = meets site requirements, project proceeds to next step.  
**if no** = does not meet requirements. Projects that do not meet the Farmers Screen site requirements are referred to an agency or company that can provide other screening options.