

Extreme Ice Problems with Stock Water Diversions



Presented by: Chuck Simpson

- We operate up to 70 stock water fish screens every year.
- Occasionally water moving thru Fish Screens will freeze and prevent any water from reaching the livestock.
- Multiple bay screens - we pull 1 bay In December and dam board up the empty bay above the water level to prevent fish from entering the diversion.
- During extreme cold weather screens freeze raising water levels, water then spills over dam boards allowing some water to go down the ditch to livestock.
- Single bays have 2 OPTIONS
 1. Pull Screen
 2. No Water



According to trap box reports and screw trap monitoring, there is very little fish movement during extreme cold periods.

Fish movement increases when water warms and flows increase.

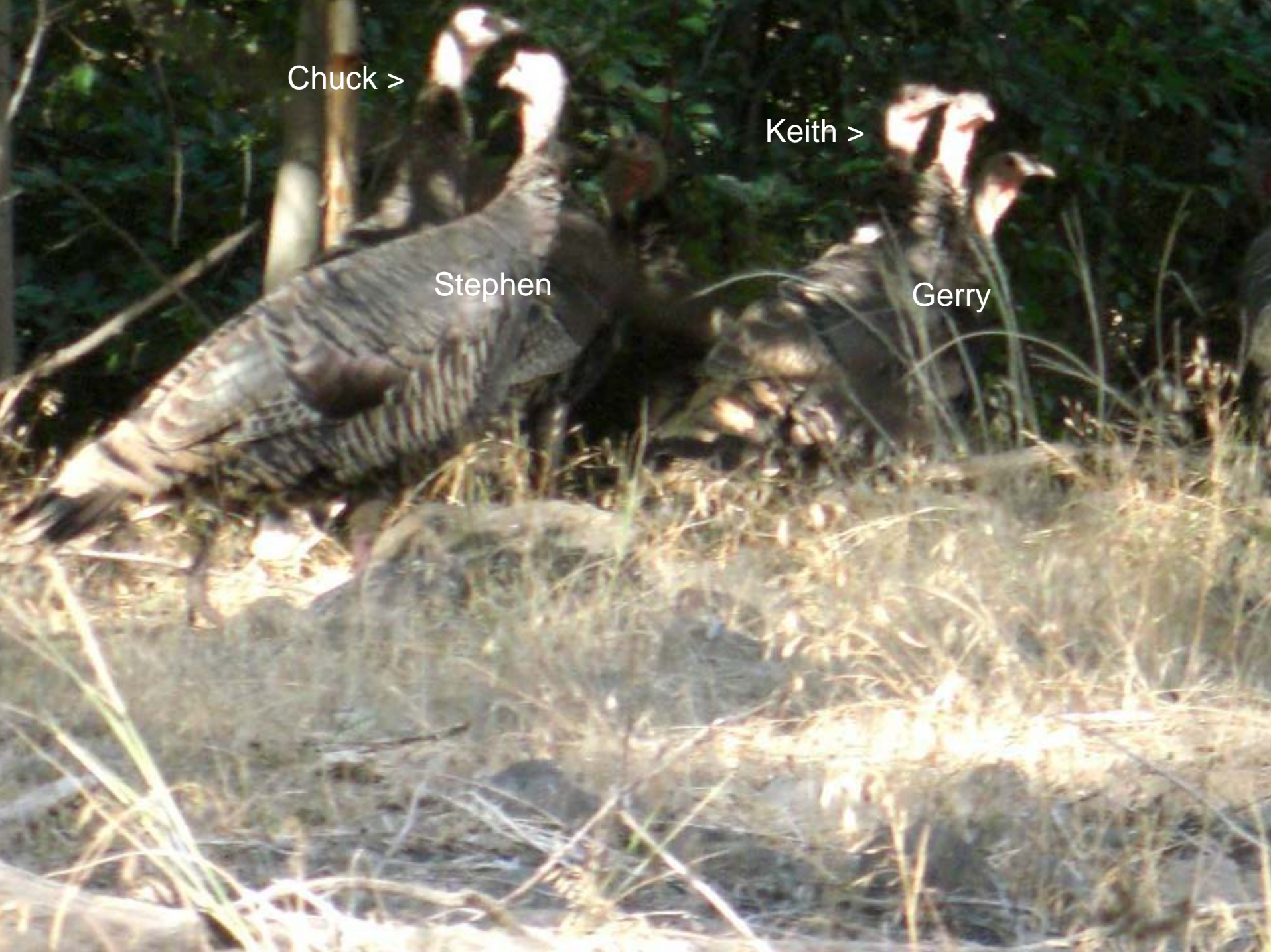


Chuck >

Keith >

Stephen

Gerry



Wallowa
County
PALM
TREES





**Screen S-08-0035
in Spring of 2008**

A photograph of a construction site for a structure labeled 'Screen 107'. The structure is a long, narrow, rectangular concrete foundation with a wooden formwork and a metal reinforcement grid on top. It is situated in a wooded area with trees showing autumn foliage. A white pickup truck is parked on the right side of the site. The ground is dark and rocky, with some construction debris and a red fire hydrant visible. The text 'Screen 107' and 'October 2005' is overlaid in white on the left side of the image. A red date stamp 'OCT 18 2005' is located in the bottom right corner.

Screen 107
October 2005

OCT 18 2005

Start of winter, snow on antlers in front of office

November 2005





I swear I am
Retiring in Maui

DEC 8 2005







DEC 20 2005







Lostine River


DEC 20 2005





< Steve is moving stock water

DEC 20 2005



Chuck told me
to see how
thick the
ice was.

DEC 20 2005





DEC 20 2005

Wallowa Lake

A wide-angle photograph of Wallowa Lake, Idaho, showing a large, flat expanse of white ice covering the water. The lake is framed by dark, forested mountains on both sides. In the background, a prominent, rocky mountain peak rises above the clouds. The sky is overcast and grey.

The ice on the lake did not melt until May, 2008



JUL 29 2008

OLD 6x24 screen

AUG 22 2008

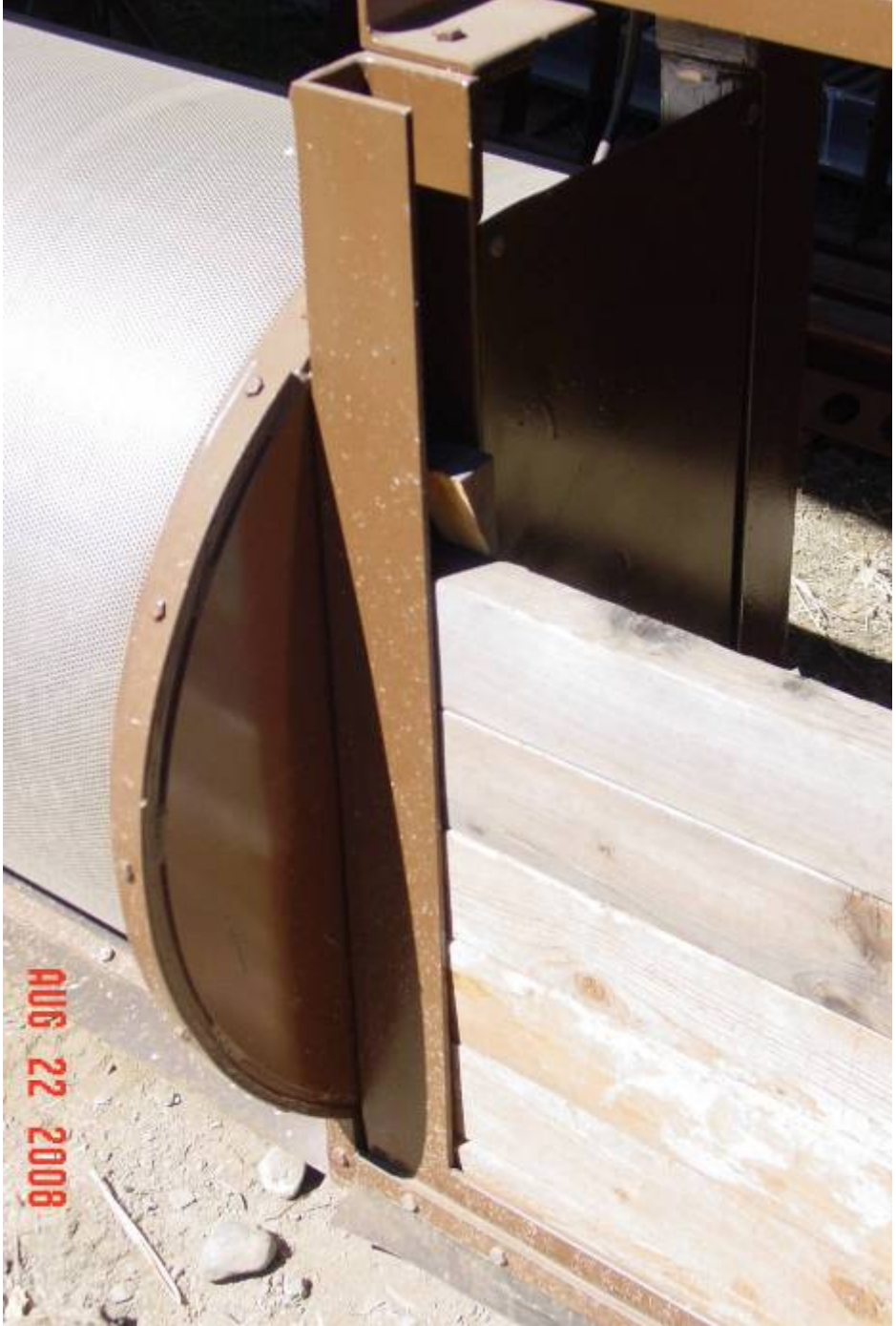


AUG 22 2008



AUG 22 2008







AUG 22 2008

Advantages

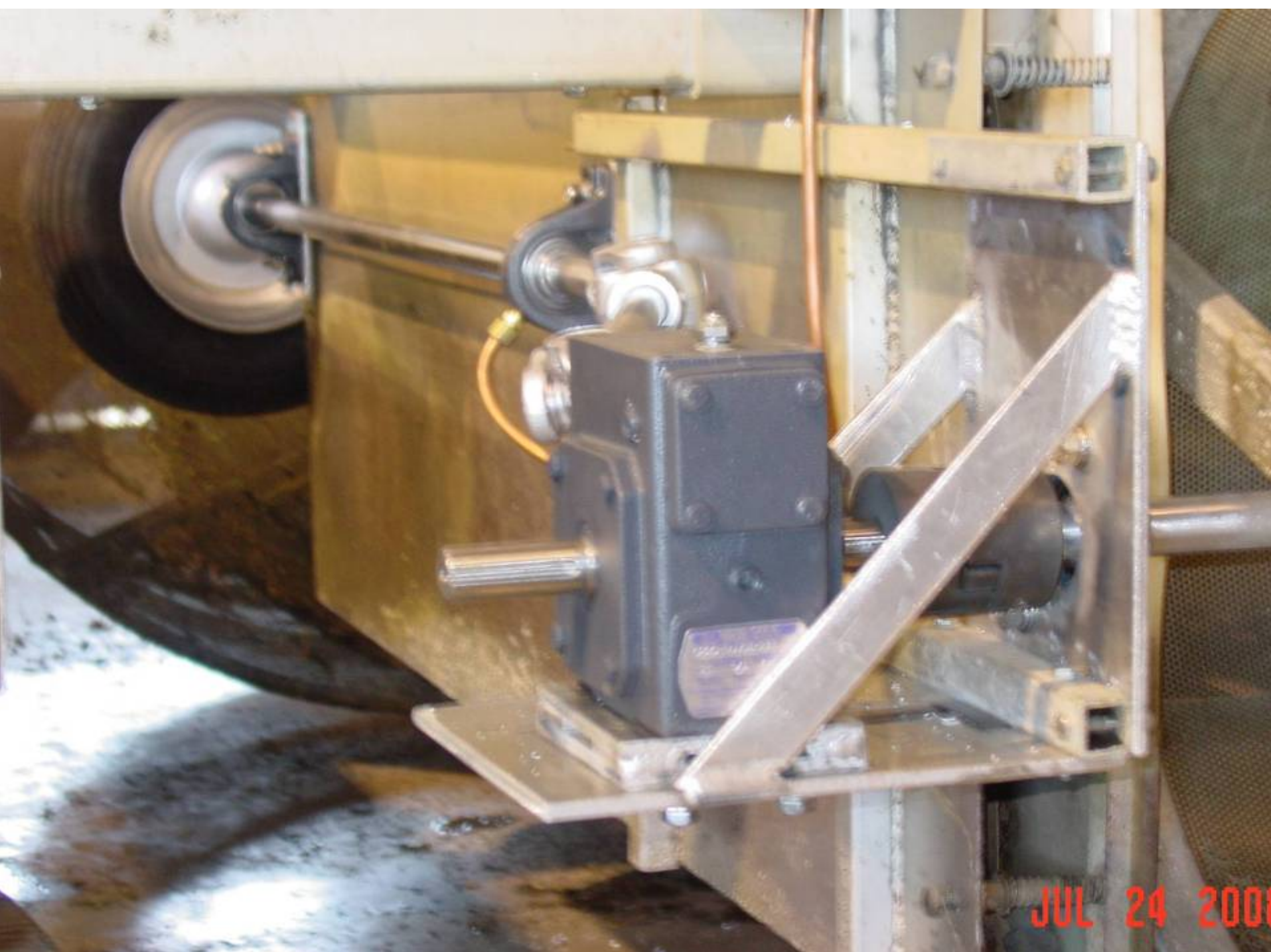
1. Won't be forced to spend time pulling frozen screens
2. Screen will function normally when ice melts
3. Less damage to screens by water users trying to get stock water







JUL 54 5008



JUL 24 2001

This makes it all worth while

7/8/2008 3:06